



# REAL SAFETY<sup>®</sup>

It's all about people

## KAG SAFETY RAIL

Up to  
**300%**

Better Grip under  
Oily Conditions

Up to  
**160%**

Better Grip under  
Dry Conditions

Up to  
**80%**

Better Grip under  
Wet Conditions

**WEIGHT  
REDUCTION**

- due to the  
Increased Strength  
of the Unique  
KAG Profile

## The best rail solution on the market for enhancing safety

With its unique swage design, it contours to the shape of a closed hand to dramatically reduce the risk of slip, trip and fall injuries. Unlike smooth rails that become slippery when wet, the KAG Safety Rail provides real grip – whether it's dry, wet or greasy.

KAG Safety Rail can be used in all industries, where safety is essential such as:

- Marine, wind and offshore
- Construction, scaffolding, Industry, public areas etc.
- Hospitals, care homes and physio settings

### Increases grip by up to 300% \*

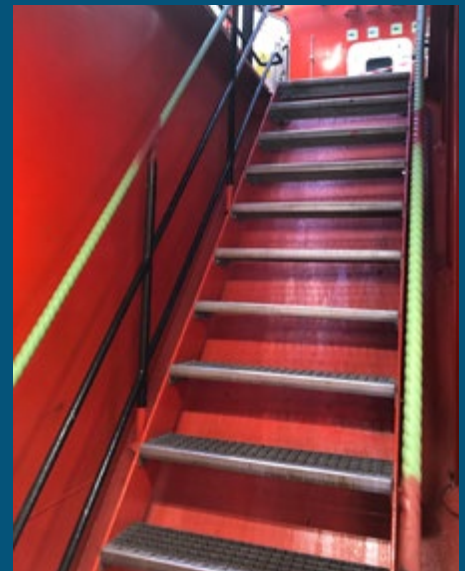
- Unique design secures a safe grip
- Meets or exceeds all relevant regulations
- Easy to install and clean
- Built to withstand tough conditions and demanding use
- Wide range of sizes and applications to suit all needs

## Solutions

KAG Safety Rails can be custom made in specific dimensions, colours and materials like steel, copper, stainless steel and aluminum.

### Dimensions:

- Diameter: 19 - 100mm
- Stainless steel: 1.2 - 2mm
- Black steel: 1.6 - 3,5mm
- Aluminum: 1.6 - 4,5mm
- Brass: 1.2 - 2mm
- Available in thickness from 1.2mm to 4.5mm depending on the type of pipe.



\* Independently tested by Queensland University of Technology, Australia