



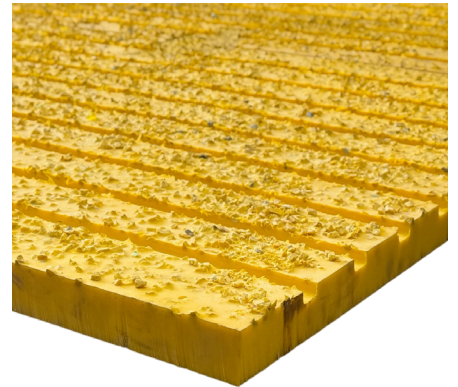
RIG-SAFETY Rotary Table Mat Technical Data Sheet

Key Benefits

- Impact resistant
- Heavy duty / High traction
- Custom moulded
- Fluid management

Custom made for:

- Drill Floor Areas
- Rotary Tables



Specifications - physical data

Colours:

- Red/Yellow covered with anti-slip material- other options available upon request

Markings/Logos:

- Can be incorporated into the surface of the product

Surface Pattern:

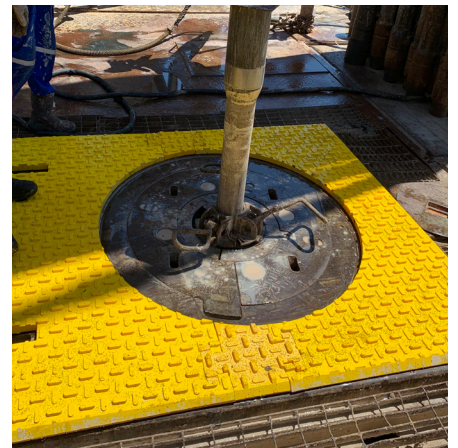
- Mats are designed to ensure maximum drain-off

Mat Thickness:

- 30mm

Mat weight:

- 36 Kg/M²



Mechanical Test information

Product Name: RIG-SAFETY Rotary Table Mat

Reference standard: DIN 53504, DIN 53505, DIN 53516, ASTM D 624, ASTM D 695-91, DIN 11357

Samples tested: 3

Test apparatus: Universal testing machine-Acquati, testing machine-EASYDUR, DSC Q20

Loadcell: 100 kg – 2500Kg

Flammability Test

ASTM D 695. Based on the fire test, our pads qualify as class B according to DIN 1402.

RIG-SAFETY Rotary Table Mat Technical Data Sheet

Technical Specification

Properties	UM	Test method	Range
Hardness	Sh A	DIN 53505	90 +/- 5
10% Modulus	MPa	DIN 53504	3 +/- 1
100% Modulus	MPa	DIN 53504	9 +/- 2
300 % Modulus	MPa	DIN 53504	20 +/- 5
Tensile strength	MPa	DIN 53504	30 +/- 7
Elongation	%	DIN 53504	250 +/- 70
Tear Strength	N/mm	ASTM D 624	60 +/- 5
Abrasion	mg	DIN 53516	30 +/- 5
Max load compression 30%	N	ASTM D 695-91	8500 +/- 1000
Compression strength	N/mm ²	ASTM D 695-91	8 +/- 1
Elastic modulus	MPa	ASTM D 695-91	0,8 +/- 0,3
Temperature range	°C	DIN 11357	-40 +100
Color			Red/Yellow covered with anti-slip material
According to drawing		DIN ISO 3302-1 M4 tolerance class	RS-20061

Declarations: Test results contained in this report relate only to specimens tested.

Chemical Properties

Benzene	3	Ethyl Benzine	2	Etilic Alcohol	4
Toluene	4	Naphtaline	4	Cyclohexane	1
Kerosene	1	Turpentina	3	Glycerine	1
Mineral Oil	1	Nitric Acid Diluite	3	Potassium Hydroxide	4
White Oil	1	Sulfuric Acid Diluite	1	Sodium Hydroxide	4
Fuel Oil	2	Hydrochloric Acid Concetrate	4	Ammonia 10%	4
Naphta	2	Formic Acid	3	Aniline	2
Lubrificating Oils	2	Acetic Acid 3	4	Barium Salt	2
Natural Gas	2	Citric Acid	1	Aluminium Chloride	3
Hesane	2	Methanol	4	Copper Chloride	1
Petroleum 250°F	4	Benzil Alcohol	4		

Ratings: 1 = Little or no impact 2 = Minor effect 3 = Moderate effect 4 = Severe effect

Installation:

- The weight of the mat itself is normally enough to secure safe placement. Otherwise, the mat can be secured using conventional fixings.

Transportation/Classification:

- The Mats are classed as non-hazardous materials and can be shipped through conventional methods.

Maintenance:

- Mats should be cleaned regularly using waterbased detergents, a stiff brush or high-pressure washers.

Health & Safety:

- This product is heavy! Please use lifting aids and suitable manpower to avoid hazards.

Please contact our technical service department for further information.